

# Tulaby Lake Association Newsletter

SPRING 2015

[WWW.TULABYLAKEASSOCIATION.ORG](http://WWW.TULABYLAKEASSOCIATION.ORG)



## Table of Contents

Twenty Years Ago  
 President's Letter  
 Calendar of Events  
 Treasurer's Report  
 Association Directors

## Twenty Years Ago

### Early morning on Thursday, July 13, 1995, the picturesque appearance of the Tulaby Lake area changed in a matter of minutes.

By mid-week Wednesday, July 12th, most vacationers from the 4th of July had returned home. The area was hit by strong rain and fierce winds on early that Wednesday morning at about 4:00AM. Damage was reported in the Bejou, Nayahwaush Mahnomen, and Waubun areas. Power was out in parts of the area; property and building damage was also reported. In hot and humid conditions, the remaining Tulaby Lake residents spent Wednesday cleaning up after the early-morning storm.



Carolyn Thorklidson recalls asking her college-age son, Blaine, on Wednesday to help with clean up. He told her she had wasted her time

because another storm was coming. He was right. In the darkness of the next morning the rumblings of an approaching storm could be heard in the distance.

Early morning on Thursday, July 13, 1995, the picturesque appearance of the Tulaby Lake area changed in a matter of minutes. The area around the lake which had been a host to a mature forest of trees, including the picturesque Tulaby Lake Drive shaded with a canopy of huge, majestic White and Norway pine trees would be destroyed.

At about 3:30AM the storm hit the Tulaby Lake area.

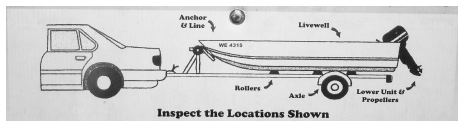
Later it would be reported the winds were as strong as 100 mph. Residents around the lake reported taking shelter where they could. Unlike many lake residents, Ray and Carolyn Thorkildson have a lower level to their home and could seek shelter there against a stone wall. On the way down Ray shined a flashlight outdoors to see one of their huge pines bending in the strong winds.

*Continued, page 4*

**“The line system at Tulaby Lake could best be described as ‘demolished’ “**

*-Mahnomen Pioneer  
 Quoting Wild Rice Electric  
 Representative Tom Ryan*

**HELP  
 STOP  
 AQUATIC  
 HITCHHIKERS**



**NOW IS THE TIME TO  
 RENEW YOUR LAKE ASSOCIATION MEMBERSHIP  
 SEE PAGE 3**

## Tulaby Lake Association Letter from the President

"...as a lake association, we look forward to supporting and representing members in the best possible form."

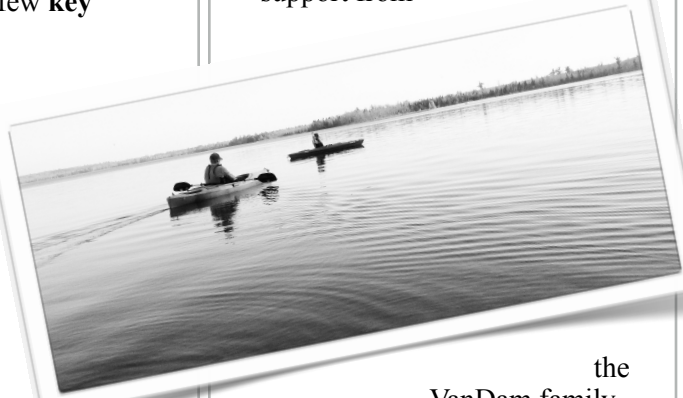
Dear Association Members,

I hope this letter finds all association members well and ready to enjoy this upcoming Spring/Summer season. Our cold and somewhat snowless winter limited some of our outdoor activities, but it drives new ways to enjoy nature. For me that was more snow shoeing and fishing.

First off, as we look forward to the **Summer of 2015**, a few **key** thoughts:

- I would like to personally welcome Scott Skauge to the board and wish him the best as he helps support and strengthen the association's mission.
- As an association we will continue to support the MPCA (Minnesota Pollution Control Agency) to collect Sechi disc and water samples once a month thanks to the generous donation of time from Ken Baumann, Dan Pinske and Dan

Peterson. These efforts continue to help us better understand the make-up of our lake and stay on the forefront of maintaining high lake water quality. Just as an added note, as lake owners we must do everything in our power to support those efforts. As an example, consider a shoreline restoration project! You will notice two lake home owners, who more recently completed Shoreline restoration projects, Irv Kalin (2013) and Scott VanDam's (2014) that turned out with stunning results. Costs are very minimal. In Scott's project, it totaled \$4,500, but with support from



the VanDam family their cost was only \$200. Great example of partnering with the state and lake home owners. If you are interested please contact one Marsha Watland with the Becker Soil and Water Conservation district more details. Marsha will make a personal visit to help design and complete the project.

- I would also like to highlight the need for members to check with your counties (Mahnomen or Becker) building

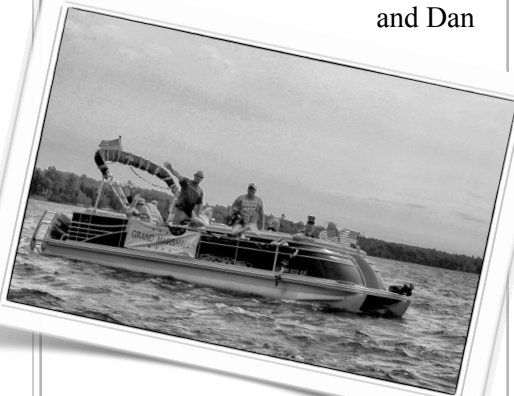
codes whenever you are considering building or property improvements.

- Check out the new Tulaby Lake Association FaceBook page!
- If you have not joined the Tulaby Lake Association or just missed paying your 2015 dues, feel free to send in your \$25 support to: ***Tulaby Lake Association, Danny Pinske, Treasurer 38150 Tulaby Lake Drive, Waubun, MN 56589***
- Keep in mind that the MN Legislature is still in the final stages of deciding the direction of the Aquatic Invasive Species (AIS) training program. The Minnesota DNR has postponed the program launch until further notice.

On a final note, as a lake association board, we look forward to supporting and representing the association members in the best possible form. Your insight and feedback on important issues is critical in creating the best possible environment for our families and future generations to come.

Enjoy the "Treasured" moments at Tulaby Lake!!

**Best Regards,**  
***John C. Oncken***



## Calendar of Events

**Sat. April 25: Ditch Clean Up**  
10:00AM Fire Hall

**Sat. April 25: Association Mtg**  
12:00PM Fire Hall  
Potluck  
Tulaby Lake Report  
Membership Meeting

**Sat. May 9: Season Opener**  
Walleye and Northern

**Sat. May 9: Season Opener**  
Large & Small Mouth Bass

**Mon. May 25: Memorial Day**

**Sat. July 4: Boat Parade**  
10:00PM Outlet Area

**Sat. July 4: Tie-Up Party**  
2:00PM Middle of the lake

**Sun. August 2: Association Mtg  
Summer Picnic  
Tulaby Lake Landing**  
12:00PM  
Pot-luck & Hotdogs  
Membership Meeting  
Election of Directors

**Sat. Sept. 5: Ditch Clean Up**  
10:00AM Fire Hall

**Mon. Sept. 7: Labor Day**

### Calendar of Events Elbow Lake Fire Department

**Pancake Breakfast**  
Memorial Day Weekend  
Sunday, May 24, 2015  
8:00AM - 12:00PM  
Fire Hall

**Pancake Breakfast**  
Labor Day Weekend  
Sunday, Sept. 6, 2013  
8:00AM - 12:00PM  
Fire Hall



## White Earth Tribal & Community College Extension Activities

During the year the White Earth Tribal and Community College offers classes for free or low cost to the community. Earlier this spring they offered a Seed Day. In March they hosted a classes allowing you to carve and take home your own



spoon made from birch or basswood. In the fall they have offered an all-day Fall Mushroom Gathering class at Little Elbow Tribal Park Lake Campground.

Watch their website for future classes.  
<http://www.wetccextension.org/>

Call 218-935-0417 Ext 314 for more information.

### ATTENTION: GRANT \$\$ FOR TULABY LAKE SHORELAND OWNERS

Becker County Soil and Water Conservation District (SWCD) has secured dollars for Tulaby Lake residents who want to restore their lakeshore. Interested landowners may be eligible to receive up to 75% cost share on a qualifying project.

Becker SWCD offers both technical and financial assistance to landowners who wish to voluntarily restore or protect their shorelines.

An experienced Shoreline Specialist will provide assistance in design, plant selection and maintenance of your site, offering complete project guidance from start to finish.

Marsha Watland at the Becker County SWCD is willing to meet with property owners to evaluate and help with designing restoration that works and meets the needs of the individual shoreline property owners. Those that have worked with Marsha have had a great experience and wonderful results.

Please take advantage of this grant opportunity which will reduce runoff into our lake and improve the beauty of the shoreline.

For more information call 218 - 846 -7360.



### THANK YOU FOR YOUR MEMBERSHIP TO THE TULABY LAKE ASSOCIATION

*Your membership dues are needed more than ever to continue lake water testing and monitoring, support and promote lake quality and lake stewardship, maintain partnerships with local and state organizations, and provide information to our membership and lake residents!*

Please send your annual 2015 membership **dues of \$25** to:

Tulaby Lake Association, Danny Pinske Treasurer  
38150 Tulaby Lake Drive, Waubun, MN 56589

A registration form is available at [www.tulabylakeassociation.org](http://www.tulabylakeassociation.org) if you need to update your current information for the directory.

**Please notify Pat Adams of any address changes** or neighbor changes so the directory and mailing information remains correct. You can email her at [tulabylakeassociation@gmail.com](mailto:tulabylakeassociation@gmail.com) or by sending information to Pat Adams, 25572 Gramford Avenue N, Wyoming, MN 55092

## Twenty Years Ago: July 13, 1995

*Continued from first page*

Elsewhere at the north end of the lake, Carol Johnson and her daughter-in-law and baby took cover under a bunk bed.

Immediately electrical power was knocked out and would remain out for eight days until power lines were rebuilt. When daylight came lake residents were in shock at the destruction. Carol Johnson was in disbelief observing that her woods were nearly flattened. Emmons, next door to Thorkildsons, lost fifty-five trees, including many huge pine trees. The lake shore area that received the least amount of damage included the area from Thorkildsons to Tom Nelson's place. (Southwest corner) Tom Nelson did lose a sailboat. Brantners lost the roof to their home. Tulaby Lake Drive was stacked with trees. The wonderful canopy of trees was gone. John and June Bowers woke to discover Tulaby Lake Drive was covered with trees and limbs. It was impassable.

Immediately the residents of the lake went to work, together, to clean up and recover. The first concern was to clear the roads. The Tulaby men with chainsaws went to work while the women pulled the brush off the road. The air had a fragrant pine smell. Carolyn observed, 'Everyone joined to help each other. Ron Moen delivered a generator to us to run a deep freeze and refrigerator for our neighborhood. Grills and gas stoves were put to use and there were many neighborhood cookouts. The cleanup took the rest of the summer, even with loggers coming in to help.

Boats and pontoons from the north end of the lake ended up littered on the south side of the lake. Pastor Fevig's boat ended upside down on Bowers' lift, while Bowers' boat ended up farther down the lake. People looking for their boats later found them where Good Samaritans had carefully beached them.

The

*Immediately the residents of the lake went to work...together...to recover.*

Mahnomen Pioneer reported that few people were injured and no deaths. Near Ponsford, at Many Point Lake, four Boy Scouts were injured. Near White Earth a man was injured when his trailer home was picked up by the winds. In Callaway the grain elevator was significantly damaged. Grain clean up took days. Grocery stores struggled to save their perishables and remain open. Local dairy farmers without generators had no way to milk.

Hundreds of people in the Tulaby Lake and McCraney Lake areas, and in surrounding resorts, were distressed with the storm damage and had to also deal with lack of electrical power for days. People affected contacted neighbors and relatives in search of generators and freezer space. Others used the lake for water and bathing. Recovery began immediately with a common goal of cleaning up. Traveling in the area was difficult for a few days.

On Thursday morning Darlene Wendt, the owner of the Tulaby Lake Store, was having a very bad day. She had no electricity and the food in her store was getting warm. She was calling her insurance company and looking for a generator. The same story was happening at Taylor Baits on Highway 113 where the power to the coolers and bait tanks was out. The bait was dying. The fuel pumps were also without power, so customers could not buy gas.

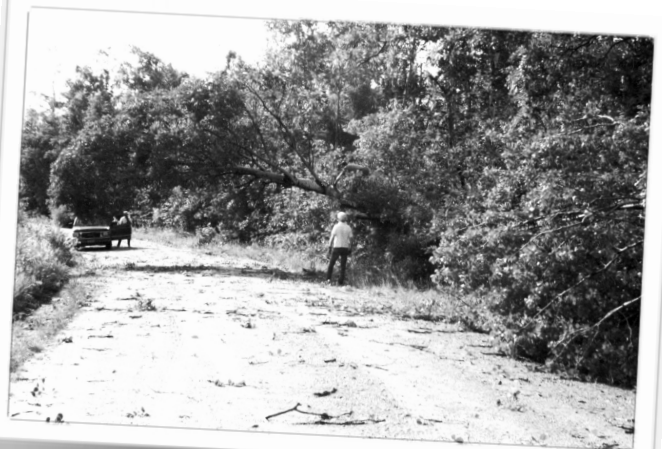
The local power company, Wild Rice Electric, went into overdrive. Tom Ryan, the Customer Service representative at the time, said the line system at Tulaby Lake could best be described as "demolished". He reported that any help clearing trees and debris away from lines would speed up the process of restoring power. It was estimated that 60% of the consumers in the area were without power immediately after the storm, affecting about 11,200 consumers. By Thursday afternoon it

was estimated power had been restored to about half; however, Ryan could not, at that time, estimate when the power would be restored in the Tulaby Lake area. By the following Sunday power was restored to customers in the Taylor Baits area; on Monday power was restored to the McCraney Lake area. Power was reported off in the Tulaby Lake area for eight days.

The Minnesota DNR estimated that more than 200,000 acres of trees were affected by the storm, which the weather people referred to as a 'microburst'. In many areas the trees downed look they were hit with giant, powerful eggbeater. Some said that from the air it looked as if someone cut a 4.5 mile swath, 17.5 miles long starting 2 to 2.5 miles on the west side of White Earth Lake, all the way past Tulaby.

It was amazing that with such high winds, 100-115 mph, for 23 minutes and so many trees knocked down, nobody was killed or seriously hurt in this storm. It was probably fortunate that the storm hit mid-week when fewer people were at the lake. Today as you drive around Tulaby Lake or walk in the woods, you can still see evidence of the storm. Trees, in many areas, are laying down in a single direction; huge balls of tree roots are heaved into mounds. Those of us new to the lake can only imagine the loss felt by the residents on the morning of July 14, 1995.

Thank you to Carolyn Thorkildson for a first-hand account of the July 1995 storm that hit the Tulaby Lake area. Other information in this article is from the July 20, 1995, Mahnomen Pioneer



## Board of Directors

Association Board Member Roster  
The following is a list of Tulaby Lake Association Board members and their contact information.

John Oncken – President  
218-791-3437 or 701-740-8148  
[joncken@truenorthequipment.com](mailto:joncken@truenorthequipment.com)

Scott Skauge – Vice-President  
701-367-2815  
[ksauge@fargocity.com](mailto:ksauge@fargocity.com)

Dan Pinske – Treasurer  
218-734-2542  
[drgrain@arvig.net](mailto:drgrain@arvig.net)

Pat Adams - Secretary  
218-734-2374 or 651-269-6070  
[patrnka@gmail.com](mailto:patrnka@gmail.com)

Ron Wasfaret – Director  
218-233-7656 or 701-429-7337

Scott VanDam – Director  
701-318-2828  
[ocpdrs@ideaone.net](mailto:ocpdrs@ideaone.net)

Ray Thorkildson - Director  
218-734-2230  
[rcthorkildson@gmail.com](mailto:rcthorkildson@gmail.com)

Ken Baumann - Director  
218-734-2204  
[susanjbaumann@aol.com](mailto:susanjbaumann@aol.com)

Dan Peterson – Director  
218-734-2472 or Cell 701-238-7391  
[dpeterson@e4brokerage.com](mailto:dpeterson@e4brokerage.com)

### Board member Terms Ending in 2015:

Dan Peterson  
Danny Pinske  
John Oncken

### Board member Terms Ending in 2016:

Ron Wasfaret  
Ray Thorkildson  
Scott VanDam

### Board Member Terms Ending in 2017:

Ken Baumann  
Scott Skauge  
Pat Adams

## Treasurer's Report - April 2015

### Treasurer's Report - Danny Pinske

The Tulaby Lake Association currently has 92 paid members. Starting in 2013 annual membership dues increased from \$20 to \$25.

Tulaby Lake Association dues are used for expenses aimed at improving our lake community. Expenses so far in 2015 include:

Walleye rearing ponds \$300.00

**Current Balance: \$3,465.05**

We encourage everyone on the lake to join the Tulaby Lake Association, including new property owners and former members.

Thank you!

### Tulaby Lake Association is on Facebook! Like us!

Please check out the updates, comments and photos on our Facebook page! We hope our Facebook page is another place to share the fun and meet our lake neighbors.



**STOP AQUATIC  
HITCHHIKERS!**

Prevent the transport of nuisance species.  
Clean all recreational equipment.  
[www.ProtectYourWaters.net](http://www.ProtectYourWaters.net)

### The Association Thanks Irv Kallin

Long-time lake resident, Irv Kallin, was honored at the August 2014 Lake Association Meeting. Earlier in the summer Irv announced his retirement from the Board of Directors.

His dedication to preserving the water quality and maintaining the overall recreational value of the lake has motivated him to get involved, study the lake, and speak out to help others understand the threats to our beautiful lake. He has read through reports and data, asked questions, sought out experts, and actively worked with visiting experts and college students to collect more data on the lake.

Irv has generously given his time to the preservation and protection of Tulaby Lake by spending year after year supporting the collection and delivery of water samples. These samples have been invaluable to the water experts who have and continue to monitor the water quality of Tulaby Lake.



A few years ago Irv and his wife Arolene restored their shore-line. They have shared the beauty of their work and encouraged others to do the same to help the lake stay healthy and clean for future generations to enjoy.

Thank you, Irv for your years of work.

*Jon Oncken, Tulaby Lake Assc. President  
presents an award of appreciation to Irv  
Kallin. August 2014*

**TULABY LAKE ASSOCIATION Spring Events:**

**Ditch Clean Up**

Saturday, **April 25, 2015** at 10AM  
Meet at the Little Elbow Lake Firehall  
Many hands make light work. Please join us!

**Lake Association Potluck Lunch and Meeting**

Saturday, **April 25, 2015** at 12 NOON  
Potluck: Bring a dish to pass, tableware and your own beverage  
Meeting to follow the potluck lunch.  
Bring your agenda items.

**Inside: Twenty Years Ago - the Storm of 1995**

*Pictured to the right some of the clean up crew.*

*The # gals worked  
pulling brush to clear  
one lane out as guys  
used chainsaws -  
Phyllis Skurud - Carolyn  
Jaene Dovers - Virginia Cundiff  
Guts were our reward*



**TULABY LAKE ASSOCIATION**

Patrice Adams, Secretary  
25572 Gramford Avenue North  
Wyoming, MN 55092

TO: