

# TULABY LAKE TIMES

The Newsletter of the Tulaby Lake Association

Winter 2010 Issue

## In this issue...

Lake Events Calendar	Page 1
Shoreline Contest	Page 1
President's Corner	Page 2
Association Web Info	Page 3
Recycling Info	Page 4
Walleye Stocking Update	Page 4
Treasurer's Report	Page 5
Association Officers	Page 5



## 2010 Dues Reminder

Reminder to current Association members...if you have not already done so, **please mail in your 2010 annual association dues of \$20 to:**

Tulaby Lake Association  
Wally Pfeiffer  
3073 334th Street  
Waubun, MN 56589

Thank you for your membership!

## Shoreline Contest!

Becker County COLA is hosting a Natural Shoreline Commitment contest until October 2010. Restoring the shoreline to its natural state helps keep the lake water cleaner, which may allow for a healthier fish population.

Each lake association is invited to send in the names of lake property owners who have let their shoreline go natural. If you decide to let your Tulaby Lake shoreline go natural, contact Association Secretary Pat Adams by visiting the Tulaby Lake Association website and clicking on 'Contact Us' or send an email to:

*[tulabylakeassociation@tulabylakeassociation.org](mailto:tulabylakeassociation@tulabylakeassociation.org)*

Your name will be logged. Before the October deadline, Pat will enter Tulaby Lake Association members in the contest. The winning organization will get accolades from the whole state of Minnesota.

Good luck!



## 2010 Event Calendar

**May 15** – 2010 Fishing Opener for Walleye and Northern

**May 22** – Spring Trash Pickup; 10:00 AM at Fire Hall

**May 23** – Spring Association Meeting at the Fire Hall; 6:30 PM Potluck

**May 29** - 2010 Fishing Opener for Large and Small Mouth Bass

**May 31** – Memorial Day

**July 4** – Boat Parade!

**August 7** - Summer Association Meeting at the Fire Hall; 12:00 PM Potluck

**September 5** – Summer Trash Pickup; 10:00 AM at Fire Hall

**September 7** – Labor Day

## President's Corner



Winter is in full swing now, with all of the fun cold weather activities being enjoyed. Whether you enjoy ice fishing, snowmobiling, cross country skiing, bird watching, or just sitting in front of the fireplace with friends, there are so many things to get out and do at Tulaby Lake. With the wonderful weather that we experienced in November, the lake didn't freeze over until December 4<sup>th</sup> this year, a little later than other years since Annette and I have been on the lake. The snow has since come and turned Tulaby into that beautiful winter wonderland that looks right out of a Christmas Card.

As your new Association President, I'm writing to you for the first time. I would like to thank our Immediate Past President, Ron Wasfaret, for his service to our association. Also, a big thank you and recognition goes out to Virginia Cundiff, who did so many things to better our Lake and the Association. From the newsletter, to the directory, to her hours and hours of service on the board and as Secretary, a big thank you Virginia for all you did. Your shoes will definitely be tough to fill!

Another big thank you goes out to the Waubun Wildlife Club for their wonderful Walleye stocking efforts. Please see the stocking report in this issue. Both the Minnesota DNR and the Waubun Wildlife Club have stocked the lake this year and it is much appreciated by the fisherman and those that enjoy a walleye fish fry around the lake!

We have started a new decade on Tulaby. Not that the lake itself is at all impressed. Tulaby has seen so many decades come and go, dating back thousands and thousands of years since the glaciers receded and carved out our diverse northern Minnesota landscape. I can't help but think about our short time at Tulaby. What will the next decade bring for our lake? Will we find our lake in better condition 10 years from now, or will our lake be worse off?

We have some difficult news to report. This year, Minnesota Pollution Control Agency has listed Tulaby Lake on the "impaired waters list." We were listed because we have had 10 nutrient readings above the target measurements for phosphorus, chlorophyll, and transparency. Tulaby's levels are high on both phosphorus (slightly) and moderately on chlorophyll. The lake has tested ok on transparency. Since Tulaby is not a super deep lake, it is more susceptible to some issues that can develop. Looking at data, Tulaby Lake has just entered into eutrophic (nutrient rich) range, which is somewhat unusual for a forested watershed lake.

Your Association is committed to learning what can be done to reverse this trend. There are many theories as to why we have seen the nutrient levels rise in our lake over the last dozen years. There are some things we know, and many things we don't know. We know we do not have industry or agriculture runoff in our watershed that has plagued other lakes in our state. That said, we don't know if the cause is faulty septic systems, lawn fertilizers, or other more natural causes. In 1997 there was a large storm with 100+ mile per hour straight line winds that knocked down a tremendous amount of trees around our watershed. These trees are decaying, and decaying matter produces a number of nutrients which end up in our watershed. In addition, most of us have seen the work of the beavers around the lake and the growth of acres and acres of forest under water from their handiwork. This produces more decaying matter. And what role does the stream outlet being dammed by beavers and causing our lake levels to rise cause? We know that high water creates additional shore erosion, and shore erosion causes more nutrients to be deposited. The bottom line is we don't know for sure what is causing the growth of the nutrients in our lake.

**(More from the President, continued from Page 2)**

To that end, your Association has taken a number of steps to help us understand the problem and identify some potential recommendations and solutions. We formed a committee to review options, including hiring a professional water quality consultant review the data and help provide a water quality plan. We have rejoined Coalition of Lake Associations (COLA), an organization made up of lake associations, promoting water quality. Some of the benefits we receive as a member association of COLA include:

- Learn and gain from the experiences of others in the COLA group (grants, lake management plans, etc). There are other lakes that have gone through similar issues that we can learn from.
- COLA newsletter
- Becker County Shoreline Guide (supported partly by COLA and outside money)
- Continuing educational meetings on lake issues including zoning and environmental issues
- Water monitoring analysis discount
- Working together on lake issues as a group
- Invasive weed and aquatic species education

Through these steps, we will be developing a number of proposals for the Association to consider as part of a water management plan. Our goal is to better understand the causes of the increasing nutrients in our lake and what can be done about reversing some of the trends. To be removed from the impaired water list, we must undergo steps as dictated by the Federal Clean Water Act, starting with a study to determine causes and a plan to have it improved. We will research what grants or options exist for our Association. Above all, we look to keep the membership informed on options for improving our water quality.

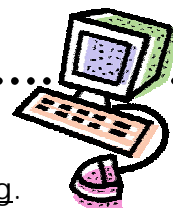
What does this mean to you? If you have spent any time on Tulaby, you have probably seen the filamentous algae in early summer—the moss that covers fish hooks and lures, on plants, and rocks. Last August we saw the lake turn “pea green” for a few weeks from a planktonic algae bloom (free floating algae). We also saw the tremendous mats of Canada Waterweed (a natural weed to Tulaby Lake) that grew in such high amounts last year and washed up on a number of beaches around the lake. Algae blooms and excessive weed growth like this will be more common as we go forward if we continue to see excess nutrients like phosphorus, chlorophyll, etc. in our water.

As we think about his new decade, and our stewardship responsibilities of Tulaby Lake, I ask each member to consider what part you can play in making our lake cleaner and our surrounding environment better for our children and grandchildren. Together we will leave our lake better than we found it and enjoy its beauty and activities for decades to come.

Sincerely,  
Dan Peterson  
Tulaby Lake Association President

**We're on the web!**

Visit the Tulaby Lake Association on the web at [www.tulabylakeassociation.org](http://www.tulabylakeassociation.org).



Here you'll find everything lake and association related, including membership information, lake quality data and details about upcoming events. You can also access board member information, meeting minutes and previous newsletters. The Association Board is committed to keeping the website information current and relevant. Please visit and send your suggestions and ideas to:  
[tulabylakeassociation@tulabylakeassociation.org](mailto:tulabylakeassociation@tulabylakeassociation.org).



## Becker County Recycling!



The Becker County Recycling Shed at the Elbow Lake Store accepts the following items:

**Cans** - Clean aluminum cans, separated from clean Tin or Steel cans (no need to remove labels); also dried empty paint cans (lid removed) and empty aerosol cans.

**Cardboard/Paperboard** - Clean corrugated and brown paper grocery bags, broken down and flattened; paperboard such as pop boxes, tissue or cereal box material.

**Glass** - Clear, brown or green bottles, jugs or jars. Must be clean with cap removed. No light bulbs, mirrors, window glass, dishes, drinking glasses, oven-ware ceramics or vases!

**Magazines** - ALL magazines and small catalog flyers. *No catalogs, TV guides, readers digest, books, or wrapping paper!*

**Mixed Paper** - ALL junk mail and brochures and telephone books.

**Newspaper** - Newspapers, shopper and anything delivered with a Sunday paper is acceptable.

**Office Paper** - White or light colored bond paper, white index cards, computer paper, manila file folders, adding machine paper, envelopes (with or without windows), copy or fax paper.

**Plastic Bottles** - ONLY screw top bottles, with a 1 or 2 on the bottom. *Only narrow necked bottles. NO yogurt, cottage cheese, motor oil, plastic wrap, plastic bags, plastic packaging or disposable diapers.*

**Telephone Books** - Telephone books are accepted in the recycling sheds in mixed paper barrel.

**Help keep our lakes and parks clean!**



## 2009 Walleye Stocking Update

The stocking of walleye in Tulaby Lake is done by two groups. In 2009...

- The DNR stocked Tulaby Lake with 102 pounds of fingerlings (1020 fingerlings) and 18 pounds of yearlings (36 yearlings)
- The Waubun Wildlife Club stocked Tulaby Lake with 2,200 yearlings.

Tulaby Lake Association annually contributes to the Department of Natural Resources Detroit Lakes Area Fisheries to support the leasing of walleye rearing ponds. We received a letter of appreciation for our contribution along with a stocking report.

Walleyes are stocked according to the management plan that is in place for each lake. The number of walleye stocked in a lake depends on many things, including natural reproduction rates, lake size, and available habitat.

### **Stocking Fish Sizes:**

**Fry:** Newly hatched fish that are ready to be stocked usually called "swim-ups". Walleye fry are 1/3 of an inch or around 8 mm.

**Fingerling:** Fingerlings are one to six months old and can range from a size of one to twelve inches depending on the species. Walleye fingerlings range from three to eight inches each fall.

**Yearling:** Yearling fish are at least one year old. A one-year-old fish can range from three to twenty inches depending on the species. Walleye yearlings average from six to twelve inches.

**Adult:** Adult fish are fish that have reached maturity. Depending on the species, maturity can be reached at two years of age. Walleye reach maturity between the ages of four and six years.

## Treasurer's Report

Balance as of August 2, 2009	\$4,882.69
Dues Collected	\$100.00
Interest Dividend Earned	\$5.98
Annual Picnic Expenses	-\$124.90
Becker County COLA Dues	-\$315.00
2009 Water Testing	-\$200.00
Association Secretary & Treasurer Wages	-\$150.00
Annual Association Website Fee	-\$107.40
<b>Balance as of December 31, 2009</b>	<b>\$4,091.37</b>

We encourage everyone on the lake to join the Tulaby Lake Association, including new property owners and former members.

The Association meets two or three times each year from May to September. Dues remain at \$20 per year and are used for the betterment of the lake - clean water efforts, resolving environmental problems and stocking of fish.

Thank you!  
Wally Pfeiffer, Treasurer

## Association Board Member Roster

The following is a list of Tulaby Lake Association Board members and their contact information.

Dan Peterson - President  
218-734-2472 or Cell 701-238-7391  
[dpeterson@e4brokerage.com](mailto:dpeterson@e4brokerage.com)

Dan Pinske - Vice-President  
218-734-2542  
[drgrain@arvig.net](mailto:drgrain@arvig.net)

Wally Pfeiffer - Treasurer  
218-734-2219

Pat Adams - Secretary  
218-734-2374 or 651-269-6070  
[patrnka@gmail.com](mailto:patrnka@gmail.com)

Ron Wasfaret -Board Member  
218-734-2532

Barry Gunderson - Board Member  
218-734-2452  
[bgundo24@aol.com](mailto:bgundo24@aol.com)

Irv Kallin  
218-734-2317  
[arloineirvkallin@yahoo.com](mailto:arloineirvkallin@yahoo.com)

Mary Barsness  
701-213-1909  
[mcbars@aol.com](mailto:mcbars@aol.com)

John Bowers  
218-734-2445  
[jbowers@sentco.net](mailto:jbowers@sentco.net)