

TULABY LAKE TIMES

The Newsletter of the Tulaby Lake Association

Winter 2012 Issue

In this issue...

Lake Events Calendar	Page 1
President's Corner	Page 2
Association Web Info	Page 4
Security Lights	Page 4
Treasurer's Report	Page 5
Association Officers	Page 5
Water Quality & Testing	Page 6
Invasive Species Info	Page 8
Eagle View News	Page 9
Parade Grand Marshall	Page 10
History from Pfeiffers	Page 11



See page 11 of this newsletter for great stories on the history of our lake from Wally and LaVerne Pfeiffer!

2012 Calendar of Lake Events

- May 5** – Spring Trash Pickup (4:00 PM at Fire Hall)
Spring Association Meeting & Potluck (6:00 PM at Fire Hall)
- May 12** – 2012 Fishing Opener for Walleye and Northern
- May 26** - 2012 Fishing Opener for Large and Small Mouth Bass
- May 27** – Elbow Lake Fire Department Pancake Breakfast
- May 28** – Memorial Day
- July 4** – Boat Parade! (10:00 AM meet at the bay by the outlet)
- July 28** - Spring Association Meeting & Potluck (12:30 PM at Fire Hall)
- August 25** – Summer Trash Pickup (10:00 AM at Fire Hall)
- September 2** – Elbow Lake Fire Department Pancake Breakfast
- September 3** – Labor Day

President's Corner

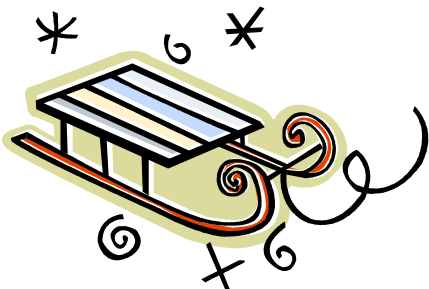


As I sit and write this report, I look out over the frozen expanses of Tulaby Lake. How different the lake is during winter. Quiet is the first thing I notice. No leaves to rustle in the wind. No sound of waves lapping the shore. Silence... just the occasional ice auger, snowmobile, or coyote yipping into the night sky. While the lake is silent, there remains a lot going on beneath the surface of the ice. The weeds of summer continue to decay and add nutrients to the water. The predators, Northern Pike and Walleye, feed occasionally on unsuspecting prey (and by some of the reports) and the occasional bait or lure. The lack of snow cover allowed the lake to freeze very solid this year, with over a foot of ice by New Years Day.

I'm pleased to report a number of items to you this year. First, we have escalated the testing of the lake in 2011. We increased the frequency and location of our testing activity. Testing was done on the main lake, both the water and underwater soil samples, along with secchi disk readings. Testing was done on the seven major streams that empty into the lake, both where the stream entered into the lake, and upstream from the lake. Additional tests were conducted on a number of the flowing wells that are entering into the lake. Many thanks go to those who helped with the testing, but especially the many hours donated by Danny Pinske and Irv Kallin for their efforts. We also had Dr. Joe Magner, a Research Professor from the University of Minnesota, come to the lake and physically conduct some water and soil samples on the lake.

The data collected this year has been sent to the laboratories and is currently being compiled and analyzed. We hope to have some analysis and reporting to come back to us this spring. We remain hopeful that through the additional testing, recommendations can be made on actions that we can take as an association to help improve our lakes water quality or prevent our lake from entering the impaired water status by the Minnesota DNR. We have been told that the Minnesota Government shutdown has backlogged some of the analysis but we hope to provide a full report at our May membership meeting and expect to have some items of discussion to put before the membership. We look for your attendance and input at this important meeting.

Your Association has also remained involved in, and continues to support, the Coalition of Lake Associations (COLA) here in Minnesota. There has been a lot of work and discussion by the various lake associations and the Minnesota DNR and State Government in the area of prevention of the spread of invasive species. Lakes not to far from Tulaby have tested positive for zebra mussels and Eurasian Milfoil. Invasive plants and flowers have been found in the wetlands around Tulaby and in ditches along the way. Asian Carp has made its way up the Mississippi and Missouri River systems. Various news outlets have had a number of article and proposals on how the DNR is going to try to stop the spread of this fish in the Mississippi River system.



(Continued on Page 3...)

(More from the President, continued from Page 2)

In order to attempt to stop the spread of aquatic invasive species (AIS), the State has passed a series of laws. The Minnesota DNR will move from warnings to enforcement in 2012. The law now requires:

- All live wells be emptied and all boat plugs to be removed while trailering boats.
- Banned use of bait using water from a previous lake.
- Visual inspections are required to remove any vegetation, mud, or attached to the boat or trailer or other equipment before driving on a public road.
- Service Providers (individuals or businesses that are hired to install or remove water related equipment such as boats, docs, boat lifts or structures) have strict new requirements, including training and certification.
- The DNR will have over 150 more access inspectors in 2012.
- There will be mandatory roadside check stations this year to ensure that boaters are following the new rules on AIS control.
- There will be increased inspections at fishing tournament on infested lakes.
- Purchasing 20 portable decontamination units to wash boats at landings and try to stop the spread of zebra mussels.
- Fines and citations authorized for failure to comply with law

While this may sound like a lot, a lake like Mille Lacs has over 40 boat landings alone! This popular fishing lake has an explosion of zebra mussels and there is no way the DNR can cover all of the landings. The DNR reports that over 60 Minnesota Lakes have already been infected with zebra mussels. It's not just anglers and boats that are a concern. A Fargo man was recently charged with moving a boat lift with zebra mussels attached in Otter Tail County after he purchased a boat lift from an infested lake and moved it to his lake. This information requires all of us, as stewards of our lake and lakeshore, to be ever vigilant and communicate with those we see and meet around the lake, especially at the boat landing. Each of us, need to talk to those we meet, and do our part to make sure our lake remains as pure and clean and natural for us, and our future generations, to enjoy.

We need your help to keep our Association strong. With the retirement of our long time treasurer, Wally Pfeiffer, we have made some changes. Your yard light bill will now come direct from Wild Rice Electric. In order to save money, we are placing your Association Dues notice in this newsletter. We count on our membership to provide us with the funds to test and report our water quality, walleye stocking (over 627 pounds of fingerlings were stocked in the lake in 2011, at approximately 31.8 walleyes per pound, that close to 20,000 walleye fingerlings!), and remain active and vigilant with our government officials on items affecting our lake and lake shore. We have had a number of new neighbors move onto the lake. Please do your membership part and invite them to our meeting in May. We will also be updating the Tulaby Lake Directory this year, so please make sure your contact information is correct. Together we make Tulaby a better place!

On behalf of your Board of Directors, I thank you for your continued support of our Association and look forward to seeing you on the lake very soon!

Sincerely,
Dan Peterson
Tulaby Lake Association President



Lake Security Lights

As part of a long-standing agreement with the Wild Rice Electrical Cooperative, the Tulaby Lake Association had coordinated the payment for security lights (night yard lights) located on properties around the lake.

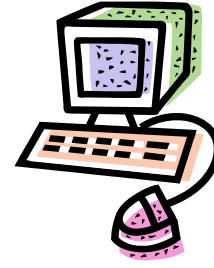
Under this agreement, the Tulaby Lake Association Treasurer mailed payment notices to lake residents, collected payments and made an annual lump sum payment to the Cooperative to cover the cost of light operation and maintenance.

As this agreement required extensive record keeping and follow-up on the part of the Tulaby Lake Association Treasurer, the Association Board of Directors recommended that this agreement be discontinued. At the August 2011 Association Meeting, Tulaby Lake Association Members voted to discontinue this agreement effective January 2012.

Under the new billing structure, the Wild Rice Electric Cooperative will add security light costs the monthly electric bills for those lake residents who would like to maintain a security light on their property. It is unclear if the Cooperative will be able to divide the security light costs for those lake residents who share a light with neighboring properties.

The Tulaby Lake Association encourages lake residents to maintain security lights on their properties. They provided much-needed illumination on dark roads and help prevent nighttime vandalism.

If you have questions about your security light, please contact the Wild Rice Electric Cooperative directly at (218) 935-2517



We're on the web!

Visit the Tulaby Lake Association on the web at www.tulabylakeassociation.org.

Here you'll find everything lake and association related, including membership information, lake quality data and details about upcoming events.

You can also access board member information, meeting minutes and previous newsletters.

The Association Board is committed to keeping the website information current and relevant.

Please visit and send your suggestions and ideas via email to the lake association at: tulabylakeassociation@tulabylakeassociation.org.

Treasurer's Report

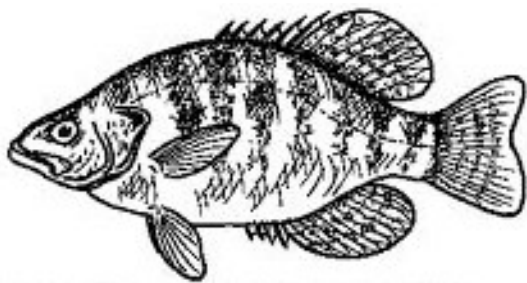
The Tulaby Lake Association had approximately 100 members in 2011. Annual membership dues were \$20 in 2011; this amount will be unchanged for 2012.

Tulaby Lake Association dues are used for expenses aimed at improving our lake community. In 2011, that included:

Fish Stocking	\$200.00
Lake & Stream Water Quality Testing	\$1,300.00
Annual Picnic Expenses	\$152.98
Association Mailings & Website	\$270.63
Association Treasurer Fees	\$43.75
Balance as of December 31, 2011	\$3,423.15

We encourage everyone on the lake to join the Tulaby Lake Association, including new property owners and former members.

Thank you!
Dan Pinske, Treasurer



County Board of Adjustments News

Bobby Brevik has been appointed to the Mahnomen County Board of Adjustments. He filled the position vacated by Wally Pfeiffer who retired from the Board after over 26 years of service.

Congratulations to Bobby and thank you to Wally for his dedication and hard work!

Association Board Member Roster

The following is a list of Tulaby Lake Association Board members and their contact information.

Dan Peterson – President
218-734-2472 or Cell 701-238-7391
dpeterson@e4brokerage.com

Scott Van Dam – Vice-President
701-318-2828
svandam@ideaone.net

Dan Pinske – Treasurer
218-734-2542
drgrain@arvig.net

Pat Adams - Secretary
218-734-2374 or 651-269-6070
patrnka@gmail.com

Ron Wasfaret – Director
218-233-7656 or 701-429-7337

Barry Gunderson – Director
218-734-2452
bgundo24@aol.com

Irv Kallin – Director
218-734-2317
arloineirvkallin@yahoo.com

Ray Thorkildson - Director
218-734-2230
rcthorkildson@gmail.com

Ken Baumann
218-734-2204
susanjbaumann@aol.com

Board Member Terms Ending in 2012:

Barry Gunderson
Dan Pinske
Dan Peterson

Board Member Terms Ending in 2013:

Ron Wasfaret
Ray Thorkildson
Scott Van Dam

Board member Terms Ending in 2014:

Ken Baumann
Pat Adams
Irv Kallin

Tulaby Lake Water Testing and Water Quality

The Tulaby Lake Association has a long tradition of monitoring the water of Tulaby Lake. For over twenty years, association volunteers have collected readings, along with collecting and delivering water samples using procedures that ensure the samples are not compromised. Water samples are processed by RMB Environmental Laboratories in Detroit Lakes. These efforts have given solid and useful historical data to analyze and compare against current water conditions.

However, recent concerns about water quality in Tulaby Lake have resulted in increased testing. Last summer, water samples from the lake, several inlets and flowing wells were collected and submitted to the lab. Lake association members Danny Pinske and Irv Kallin have contributed much time and energy to this issue in 2011.

In early summer 2011, Bruce Paakh of the Minnesota Pollution Control Agency in Detroit Lakes (Drainage, Lakes and Streams 218-846-8115 bruce.paakh@state.mn.us), contacted Danny Pinske. Mr. Paakh reported he had been looking at the data from Tulaby Lake since 1990 and he and others have never seen lake conditions like Tulaby's in other Minnesota lake. He described a consistent cycle seen in the lake for the last 20 years: high phosphorus in the spring; low phosphorus in June and July (with noticeable improved lake water quality); development of green algae slime in late July into as a result of high phosphorus. Tulaby Lake has been described as a dynamic lake, which means the lake has fluctuations in the phosphorus levels from low to high. Other lakes do not have this much variation in a year, which makes Tulaby's conditions interesting to study but complicated to address.

Mr. Paakh recommended the Tulaby Lake Association contact Dr. Joe Magner, a Research Scientist at the University of Minnesota as someone who would be interested in looking at the water data collected from the lake. Dr. Magner is also a Registered Professional Hydrogeologist. Within 10 days of contacting Dr. Magner, he was at Tulaby Lake collecting lake and stream samples. During this initial visit, Dr. Magner toured the lake with Danny Pinske. Dr. Magner shared few comments regarding the causes for the dynamic phosphorus cycle observed in the lake. While he indicated he would like to review water data before drawing any conclusions, Dr. Magner suggested that natural causes, improperly operating septic systems, and lawn fertilizers or cleaning products containing phosphorus are all potential contributors to the phosphorus levels observed in the lake. He did not suggest anything specific cause for the current water quality but suggested increasing the water quality testing with the following:

- Phosphorus testing every 2 weeks; \$14 each test
- Secchi disk tests every week
- Stream tests after every rainfall over .75 inch (seven streams) \$14 each test

Dr. Magner made several subsequent visits to the lake over the summer of 2011. Dr. Magner is not being paid to consult or offer recommendations; he has a genuine interest in the lake and is generously offering his assistance.

In addition to the water testing done by the lake association, other testing has been done by the Minnesota Pollution Control Agency and the White Earth Natural Resources Water Quality team. Both groups have done testing on Tulaby and other lakes and streams in the area. Minnesota EPA is compiling information from all organizations and, according to Danny Pinske, all collected data will be analyzed together at a future date. At that time, reports and recommendations will be available to the association. This information will be used to develop a plan of action steps for a long-term solution to the lake problems.

Dr. Magner made several subsequent visits to the lake over the summer of 2011. Dr. Magner is not being paid to consult or offer recommendations; he has a genuine interest in the lake and is generously offering his assistance.

(Continued on Page 8...)

In addition to the water testing done by the lake association, other testing has been done by the Minnesota Pollution Control Agency and the White Earth Natural Resources Water Quality team. Both groups have done testing on Tulaby and other lakes and streams in the area. Minnesota EPA is compiling information from all organizations and, according to Danny Pinske all collected data will be analyzed together at a future date. At that time, reports and recommendations will be available to the association. This information will be used to develop a plan of action steps for a long-term solution to the lake problems.

Given the importance of water quality to lake residents and the environment in general, the lake association board members are hopeful that some information from the Minnesota EPA or Dr. Magner will be available in the near future. The Board hopes to have some explanation for the increased levels of and fluctuations in the phosphorus measured in Tulaby Lake. This information as well as any possible efforts to address the issue will be discussed at the Spring Association meeting, scheduled for Saturday, May 5. All Tulaby Lake Association members are encouraged to attend to participate in the discussion.

Currently, lake association membership dues have covered all the costs of water testing. Limited water test data is available at RMB Environmental Laboratories web site (<http://www.rmbel.info/>). On the home page, click *Lakes Monitoring Program* and search for 'lake data' for Tulaby Lake (Becker County). A variety of reports are available. Water test data has been shared with Becker County COLA and the State of MN. Water quality data for Tulaby Lake is also available at the Minnesota Pollution Control Agency website. (<http://www.pca.state.mn.us>) Click on 'data' in the top menu bar and then follow the link 'surface water' and 'lakes'.

If you are interested in assisting with water testing, please contact any of the lake association Board members to volunteer. It is critical we continue to monitor the conditions of the lake to improve its long and short-term health for us and future generations.

The table below is from RMB Environmental Labs: 2011 Tulaby Lake

Nine samples throughout the summer from the same site (202)
 Trophic Status Index (TSI) is a calculation used for characterizing a lake's health by considering phosphorous content, algae abundance (ChlA) and depth of light penetration (Secchi). Average index **values greater than 50** are considered subject to algae blooms and poor water quality, described as 'productive.' **See the TSI column on the far right.**

Date	Time	Site	Sampler	Lab Code	Data Source	TP ug/L	ChlA ug/L	Secchi Ft.	TSI Phos.	TSI ChlAL	TSI Secchi Ft.	TSI Avg.
05-11-2011	01:30 PM	202	N/A	146025	RMB	47	20	6	60	60	51	57
05-25-2011	10:30 AM	202	N/A	147475	RMB	27	9	7.5	52	52	48	51
06-19-2011	10:45 AM	202	N/A	150162	RMB	22	9	10	49	52	44	48
07-05-2011	11:45 AM	202	N/A	152399	RMB	22	7	10	49	50	44	48
07-18-2011	11:30 AM	202	N/A	154062	RMB	29	24	6	53	62	51	55
07-31-2011	10:00 AM	202	N/A	155878	RMB	27	18	N/A	52	59	N/A	56
08-21-2011	04:30 PM	202	N/A	158436	RMB	38	27	5	57	63	54	58
09-14-2011	11:00 AM	202	N/A	160901	RMB	55	37	4	62	66	57	62
09-28-2011	02:30 PM	202	N/A	162505	RMB	65	61	4	64	71	57	64
Annual Summer Mean						36.9	23.6	6.6	55.3	59.4	50.8	55.4

Invasive Species: What are they and how can we stop them?



Invasive species are species that are not native to Minnesota *and* cause economic or environmental harm or harm to human health. Minnesota's natural resources are threatened by a number of invasive species such as **zebra mussels**, **Eurasian water milfoil**, **curly leaf pondweed**, **Spiny water flea**, **Asian Carp**, **common buckthorn**, and **emerald ash borer**. Invasive species can occur on land or in the water.

In 2011, 18 lakes in Minnesota were added to the Minnesota Department of Natural Resources (DNR) Infested Waters list because of invasive species infestation. Current DNR data reports infestations of **milfoil** have been found in over 260 Minnesota lakes, rivers and wetlands. As of December 2010, **Curly leafy pondweed** has been found in 759 lakes in 70 of Minnesota's 87 counties, the DNR reports. Both form dense mats of vegetation that can interfere with swimming and boating.

Zebra mussels were first found in Minnesota, in 1989. Since then, they have been found in over 60 inland lakes and wetlands in Minnesota, plus Lake Superior and the Mississippi, Pine, Rum, St. Louis and Zumbro rivers, according to a 2008 report by the DNR. In addition to fouling water intakes, zebra mussels affix themselves to rocks and can grow large enough to cause cuts and scrapes to swimmers, rafts or fishing line, attach to native shellfish killing them and interfere with native food chains.

Spiny water fleas collect in what the DNR describes as "gelatinous blobs" on fishing lines and downrigger cables. You can help prevent their spread by cleaning fishing lines and cables, and draining water from boats, personal watercraft and bait containers before moving from one lake to another.

There is good news, however. Thanks to the statewide cooperation of citizens, legislators, recreationalists, tourism industries, businesses, and agencies, **less than 1% of Minnesota's waters are infested** with aquatic invasive species (AIS) like zebra mussels and Eurasian water milfoil. With 15,000 lakes, thousands of miles of rivers and streams, and acres of wetlands to protect, Minnesotans recognize the importance of acting to prevent and slow the spread of the state's current and potential AIS (*Minnesota Sea Grant; March 2010*).

Lake-goers should also take the time to practice clean and drain steps to avoid violating the law. As of July 1, 2010, Minnesota state law requires boaters to remove boat drain plugs and leave them out while transporting watercraft. In addition, all such water-related equipment, including portable bait containers, must be drained before leaving any water access. Anglers who want to keep leftover bait alive should bring fresh water to replace existing water in bait containers.

Under the law, businesses that install or remove water-related equipment or structures are also held to higher standards. They must complete invasive species training and pass an examination in order to qualify for a required permit, which will be valid for three years. People who work for the service providers must also complete DNR training. The Tulaby Lake Association encourages everyone to be diligent in preventing the spread of and invasive species to preserve the quality and integrity of Tulaby Lake.

(Continued on Page 9...)

So what can we do? By following a simple procedure each time we leave the water, we can stop aquatic hitchhikers. Knowing which waters contain nuisance hitchhikers is not as important as practicing prevention procedures every time we leave any lake, stream or other body of water.

Simple Steps

- Remove any visible mud, plants, fish or animals before transporting equipment
- Eliminate water from equipment before transporting
- Clean and dry anything that came in contact with water (boats, trailers, equipment, clothing, dogs, etc)
- Never release plants, fish or animals into a body of water unless they came out of that body of water

Finally, become informed and take action! Becker County COLA website hosts a webpage with pictures of aquatic invasive species and lists the names of lakes in Minnesota that have been identified as infested with invasive species.

The Minnesota DNR works to help prevent the spread and promote the management of invasive species. They provide information on current laws, educational videos and a list of invasive species at their website, www.dnr.state.mn.us. You can also visit www.checkmylake.org for a list of newly listed lakes infested with invasive species.

The Tulaby Lake Association encourages everyone to be diligent in preventing the spread of and invasive species to preserve the quality and integrity of Tulaby Lake.



News from Eagle View Township

One of the important issues the Eagle View Township Board struggles with is the dumping of garbage within the township. The township has taken a stand of "No Dumping" anywhere within the township. Each piece of property belongs to someone, whether that is the ownership is an individual or public entity, such as the state, township or tribe. A No Dumping Policy means no garbage or plant matter should be dumped anywhere within the township.

The Board would like to thank the Tulaby Lake Association for their help with this issue and their members' continued cooperation. The White Earth Nation operates a weekly garbage collection on the east end of Tulaby Lake Drive. Rates for this service are available at the Tulaby Lake Association Website: www.tulabylakeassociation.org.

The Eagle View Township Board is striving to provide residents of Eagle View with clean, pristine areas throughout the township. By working together, this can be accomplished. Please spread the word that Eagle View Township is place where we take care of our plant matter and garbage in a responsible way.

Tulaby Lake is located within the boundaries of Eagle View Township. Eagle View became a township when it separated from Maple Grove Township in 1986. The Township Board is made up of five (5) Board Members, three (3) Supervisors, one of whom is elected yearly to serve as the Chairman, a Treasurer and a Clerk. These members are elected as a part of the General Election every even numbered year. The terms are staggered and those elected serve a four (4) year term. The Board meets at 7PM at the Elbow Lake Community Center on the second Tuesday of each month. The meetings are open to the public. When the Township Board is conducting regular business, only the Supervisors have the power to vote.

The current board members are Carolyn Thorkildson, Chairman; Pat Holzem, Supervisor; Sue Pinske, Supervisor; Bev Motschenbacher, Treasurer; and Mary Clark, Clerk.

Boat Parade Grand Marshall



Hello Tulaby Lakers,

I would like to talk to you all about the annual decision of choosing the Grand Marshall of the 4th of July Boat Parade that the Board makes. I know you can help with that decision.

Because there are no specific or established guidelines for choosing a Grand Marshall, it is difficult to make this choice. If specific guidelines were in place, I believe the selection would be much more meaningful.

When thinking about choosing a Grand Marshall there are many ideas to consider, such as:

- Should the Grand Marshall be a direct lake property owner? Or Association member?
- Could the Grand Marshall be an immediate or extended family member?
- Should the Grand Marshall be an elected official – past or present – that has served our community and country honorably?
- Could there be more than one Grand Marshal?
- Should consideration be given to young as well as senior?

I believe the reason we are able to celebrate Independence Day is primary because of our freedom, which is a result of the sacrifice made by our military men and women past and present. I feel military service should be one of any number of guidelines in choosing who the Grand Marshall may be.

Tulaby Lake Association members, you can help the Board of Directors by sharing your thoughts and ideas as to what the guidelines or criteria are important to you in selecting a 4th of July Boat Parade Grand Marshall.

We are also seeking nominations for the Grand Marshall for the 2012 Boat Parade.

To share your ideas for Grand Marshall selection and/or submit your nomination, along with a brief biography of the nominee, contact me by phone, mail or in person. You can also send an email using the email link on the Tulaby Lake Association website.

Thank you.
Ray Thorkildson, Director
37530 Tulaby Lake Drive
Waubun, MN 56589



Life on Tulaby Lake from Wally and LaVerne Pfeiffer

Wally and LaVerne Pfeiffer bought their lot on Tulaby Lake, which they heard was a quiet and good fishing lake, in 1955 from Mr. Eggers who owned Eggers Resort, where the current cooperative campground is located. Mr. Eggers would only sell fifty feet of lakeshore for \$7.00 a foot. Wally and LaVerne were happy to get their fifty feet on Tulaby Lake.

At the time, Wally and LaVerne bought their lake lot there were four resorts on the lake: Tall Pines, Tulaby Store and Resort, Egger's Resort, and Balsam Beach. According to Wally, one of the biggest changes on the lake over the years is that the resorts are now gone and the lake is very quiet on the weekends. Back in the day, all the resorts, except Egger's Resort, had a store. The Tulaby Lake Store had a good line of groceries and beer. Coffee was plentiful at the Tulaby Lake Store and a great place to go for morning coffee. Balsam Beach also had coffee and was a great place for a cold beer and visiting.

Highway 113 to the lake was not very good the first few years Wally and LaVerne came to the lake. At that time, Highway 113 was a dirt road that was not too dependable if it rained. The hills were tough to get up after a rain.

Wally and Lavern did not move to the lake immediately. They lived 130 miles from the lake but every weekend. Wally and his son, Steve, especially, enjoyed being at the lake on the weekends. As soon as school was done in May, the Pfeiffers moved to the lake and spent their summers on Tulaby. The entire family enjoyed their summers at the lake, but also enjoyed the fall.

In 1971, Wally and Lavern moved to the lake full time and made it their home, which they did for forty years. In 1971, they added on to their cabin to make more room for year around living. LaVerne went to nursing school in 1972. During that time, Wally and LaVerne drove to Detroit Lakes together. Wally worked nights from midnight to 8:00AM and LaVerne went to school during the day.

Wally has done a lot of fishing on Tulaby Lake. He reports that fishing has been good every year. The biggest walleye he caught was nine pounds. LaVerne caught two nine pounders a number of years ago, but has since stopped fishing.

Both Wally and LaVerne have made great friends at the lake. Wally served on the Lake Association Board of Directors for a number of years and recently retired from the role as Association Treasurer. Wally organized the ditch clean up events and managed the food and grilling at the annual Association summer picnic.

Wally is a veteran of World War II. He served in the Air Force on a B-17 Bomber in England. He flew 32 missions over Germany, some, according to Wally were 'pretty rough'. He once crashed landed in Holland and was injured in the war.

Wally and LaVerne were married in 1946. Wally worked for the Soo Line Railroad until 1984 when he retired. After LaVerne completed nursing school, she worked in the hospital in Detroit Lakes until 1986, when she retired. Wally and LaVerne have two children, one daughter and one son. They enjoy five grandchildren and eight great-grandchildren.

When asked to give advice to others on the lake to keep it a great place to enjoy, Wally shared that his biggest concern is the water quality of the lake and the great harm, he feels, is done by netting fish.