

# Tulaby Lake Association Newsletter

Spring 2025



## Greetings from the Tulaby Lake Association

Spring is finally here and we can't help but think about the lake. The excitement of seeing our lake neighbors and enjoying all of the lake time activities. That first bonfire with roasted marshmallows, the first cast of your fishing rod or maybe that first trip around the lake in the pontoon. Just saying those things brings a feeling of calm and enjoyment.

We hope you are also thinking about your Membership dues. We really appreciate everyone's involvement in the Tulaby Lake Association. Your membership dues are used to continue lake water testing and monitoring, support and promote lake quality, lake stewardship, maintain our partnerships with local and state organizations, fund fish stocking, and provide information to our membership and lake residents. As well as provide a Tulaby Lake Directory, Web site and Facebook page.

Remember each of us makes a difference in the quality of the lake. Whether being mindful of the Aquatic Invasive Species when entering and leaving the lake or learning from our Tulaby Lake Action Plan as to better care for our lake quality on our own lots. This plan is available on our website.

Our Spring Membership meeting will be held on **Saturday, May 24th at 10:00am**. This meeting will be held at the Elbow/Tulaby Fire Hall. This is a great time to meet new people from Tulaby Lake and to ask questions or bring new ideas to the association. We are looking for new ways to encourage everyone to enjoy time at the lake together.

Spring Ditch Clean-Up is scheduled for May 17th. Please plan to join us in keeping our ditches clean. We will meet at the Elbow/Tulaby Fire Hall at 9:00am. Your help is truly appreciated.

Kind Regards,  
The Tulaby Lake Association Board of Directors

## Tulaby Lake Action Plan

The Tulaby Lake Action Plan was developed to summarize past data and studies on the lake, set future goals for management, and give specific project ideas and actions tied to funding sources that could be completed to improve the lake's water quality.

Please visit our website to review the Tulaby Lake Action Plan. [www.tulabylakeassociation.org](http://www.tulabylakeassociation.org)

**Tulaby Lake Association Mission:** *The Association shall promote, protect, and maintain the environmental and recreational values of the Tulaby Lake area*

## Dates to Remember

Minnesota Fishing Opener May 10th

Spring Ditch Cleaning May 17th

9:00 am Elbow/Tulaby Fire Hall

Spring Membership Meeting- May 24th

10:00 Elbow/Tulaby Fire Hall

Elbow/Tulaby Pancake Breakfast

June 1st 8:00-Noon

4th of July Boat Parade

10:00 at the bay, clockwise parade

Elbow/Tulaby Pig Roast August 9th

11:00-2:00

Tulaby Lake Association Annual Meeting

August 16th @10:00 Elbow/Tulaby Fire Hall

Fall Ditch Cleaning Sept 6th

9:00am Elbow/Tulaby Fire Hall

## Ditch Clean-Up

Spring Ditch Cleaning-

May 17th - 9:00am Elbow/Tulaby Fire Hall

Fall Ditch Cleaning-

September 6th- 9:00am Elbow/Tulaby Fire Hall

Please wear boots and gloves, if you have a grabber it will work great to pick things up. Unfortunately those under 12 are not permitted to help with the clean-up. Those 12-17 must have written consent from parent or guardian. It is suggested to pick up on one side of the road at a time.

Make sure to wear required safety vests and exercise safety precautions.

Thank you in advance for your help with our Ditch Cleaning!

**2025 Tulaby Lake Association Dues of \$30.00 can be sent to PO Box 72, Waubun MN 56589**

## Tulaby Lake Association Member Directory

We would like to keep our directory as current as we possibly can. Please keep us informed if your contact information changes or if you know someone who has purchased a lake home on Tulaby Lake. The Board of Directors would love to reach out and visit with new residents.



# Tulaby Lake Association Newsletter

As I looked for some interesting history to add to the newsletter I ran across some information on the summer wind storm of 1995. I thought it would be fitting to share some of the history I found since this year marks 30 years since that horrible storm. I am sure that the information that I find will not compare to the stories of those of you who lived through that event and probably helped with the clean-up. But maybe these stories will stir up some memories of that frightening night in 1995.

The Tulaby Lake storm of 1995 was part of a larger storm event that caused widespread damage across northern Minnesota, specifically from July 9-14. This period saw both tornados and severe wind storms that resulted in extensive damage to forests, roads, and some property.

*Forest damage:* approximately 375,000 acres of forest land were affected, with about 7.2 million trees bent, broken, or uprooted.

*Road Obstruction:* many roads were blocked by fallen trees and debris, including state highways, county roads, and forest roads.

*Property damage:* while generally minimal compared to the forest damage, some homes, barns and sheds were affected.

*Power outages:* small communities and rural residents experienced widespread power outages. Tulaby Lake residents were without power for several days.

The headline in The Forum read, "Gone with the wind". The storm carried 120-129 mph straight-line winds which created an odd pattern of damage, because when it slammed into the hills it scattered, causing random destruction.

The destruction stretched from Tulaby Lake in Mahnomen and Becker Counties to Plantagenet Lake south of Bemidji. In all more than 7 million trees, enough timber to build 30,000 average sized homes, were uprooted, shattered, mowed over or snapped off 20 feet above the ground, an area Forester with the DNR reported. It was a continuous expanse of flattened trees 8 miles wide and more than 50 miles long he continued.

The Mahnomen Pioneer reported fierce thunderstorms July 12 and 13, accompanied by strong winds of a destructive nature, ripped through our area, leaving a lot of damage behind.

On Thursday morning, July 13, at a little after 4 am, for the second day in a row, another storm hit the area. This one was more destructive than the first and left damage all over, but especially in the Tulaby Lake area.

When the storms hit people took shelter where they could. For some, it was crouched in a corner at a lake cabin or in a trailer home.

As power lines went down and the electricity went out, the area was plunged into darkness. Loud crashing sounds in some areas were heard as huge ancient trees came thundering to the ground. The strong, straight-line 70+ mph winds did their worst, especially to forest areas. When people emerged in the morning, they were quite disturbed by what they saw.

With so many trees down, and power lines buried under them, it was necessary to do the clean up to get the power back on. Roadways were also covered with fallen trees and debris.





# Tulaby Lake Association Newsletter



Another article stated, by far, the worst devastation seemed to hit the Tulaby Lake area. Where once there was a mighty forest, a paler reminder now stands. Many tall trees, some hundreds of years old, came crashing to the ground. They took with them the power lines that supplied the area, and caused enough damage to leave that area without power for many days.

All along Highway 113 by Tulaby Lake you could hear the sounds of chainsaws running. Goodbye to old trees who were standing there for hundreds of years. They saw the settlement of this area. They were here before the roads. These woods just won't ever be the same.

The Great Windstorms of 1995 available in the Minnesota Legislative Reference Library stated the following.

Eyewitnesses reported that there was so much lightning that you could watch the wind's effects on the forest. The first night, winds appeared to be whipping the trees in circles, but this caused very little apparent damage. The second night started like the first with incredible lightning displays, but with the winds blowing more in a steady, single directional. Then the lightning display and winds died down prior to one final push...the big one. This intense straight-line wind lasted about 20 minutes and caused the most severe damage. Some large areas were totally leveled, with essentially all trees either broken or uprooted for miles in all directions. Other areas had fewer broken trees but broad expanses of trees bent into graceful curves. Still other areas experienced scattered patches of blow down, ranging in size from a few acres up to square mile.

A wind monitoring station near Detroit Lakes, recorded early morning surface wind speeds on July 13 averaging 55 mph, with a maximum speed of 129 mph. They calculated that winds over 100 mph were sustained for at least 20 minutes. In writing this newsletter and in reading the many articles regarding the storm, something else stood out to me. People helping people! Pictures with captions of neighbors helping neighbors, power companies working tirelessly to get the power on, or people bringing generators to businesses or just helping those who needed help.



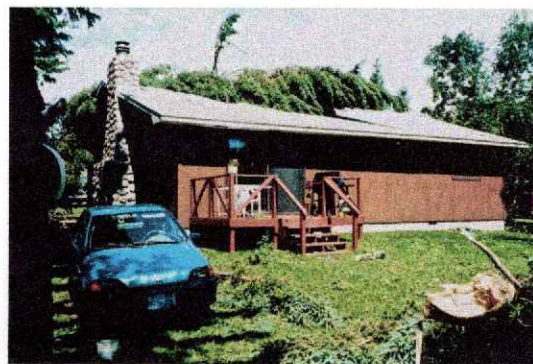
Source's: *The Forum, Mahanomen Pioneer, Mn Legislative Reference Library.* Also Thank you to Fred & Connie Soch, Kathy Wambach and Ken Baumann for the pictures and information.

## Tulaby Lake Association

### Board of Directors

President- Karen Ahmann  
Vice President- Rick Pavek  
Secretary- Vondria Winter  
Treasurer- Darius Schneibel  
Bryan Vidden  
Cathy Wambach  
Lauri Pfeiffer  
Christopher Thompson

Big Thank you to Danny Pinske  
for his years of service on the  
Lake Association board.



**Do you have a bit of Tulaby Lake History  
to share? We would love to have some  
information for future newsletters!**